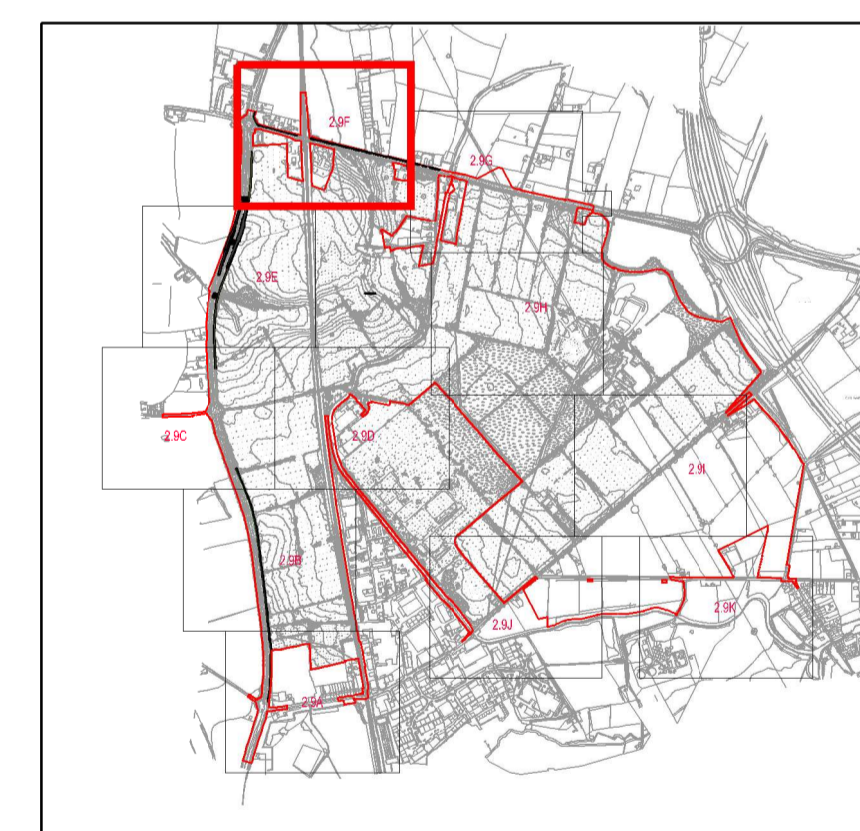
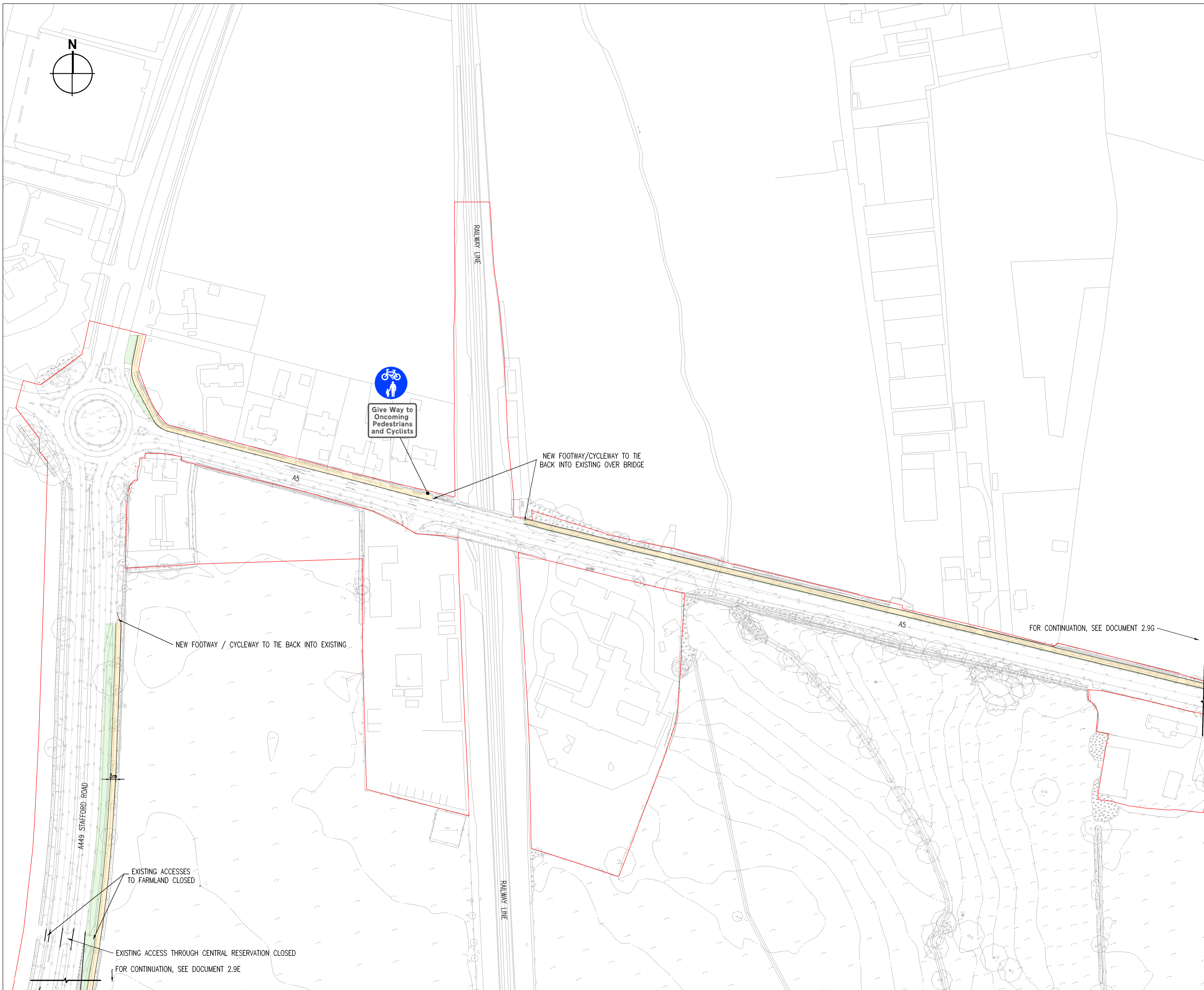


- KEY
- ORDER LIMITS
 - FOOTWAY / CYCLEWAY
 - VERGE / GRASS

NOTES:

LIMITS OF DEVIATION SHOWN ON THE WORKS PLANS (DOCUMENT SERIES 2.2) AND SET OUT IN ARTICLE 4 OF THE DEVELOPMENT CONSENT ORDER.



- F - 05/06/2018 - RED LINE UPDATED
- E - 08/05/2018 - MINOR AMENDMENTS
- D - 20/03/2018 - MINOR AMENDMENTS
- C - 02/03/2018 - RED LINE UPDATED
- B - 24/10/2017 - EXISTING ACCESS TO FARMLAND CLOSED
- A - CONSULTATION DRAFT ISSUE



Project
THE WEST MIDLANDS RAIL FREIGHT INTERCHANGE ORDER 201X

Drawing Status
SUBMISSION

Drawing Title Drawing Size A1
GENERAL ARRANGEMENT PLAN 106

Regulation Document
5 (2) (o) 2.9F

Drawn NW Date: JUNE 2018 Scale: 1:1000 Reviewed JF

Drawing No. Rev.
WSP-70001979-GA-106 F